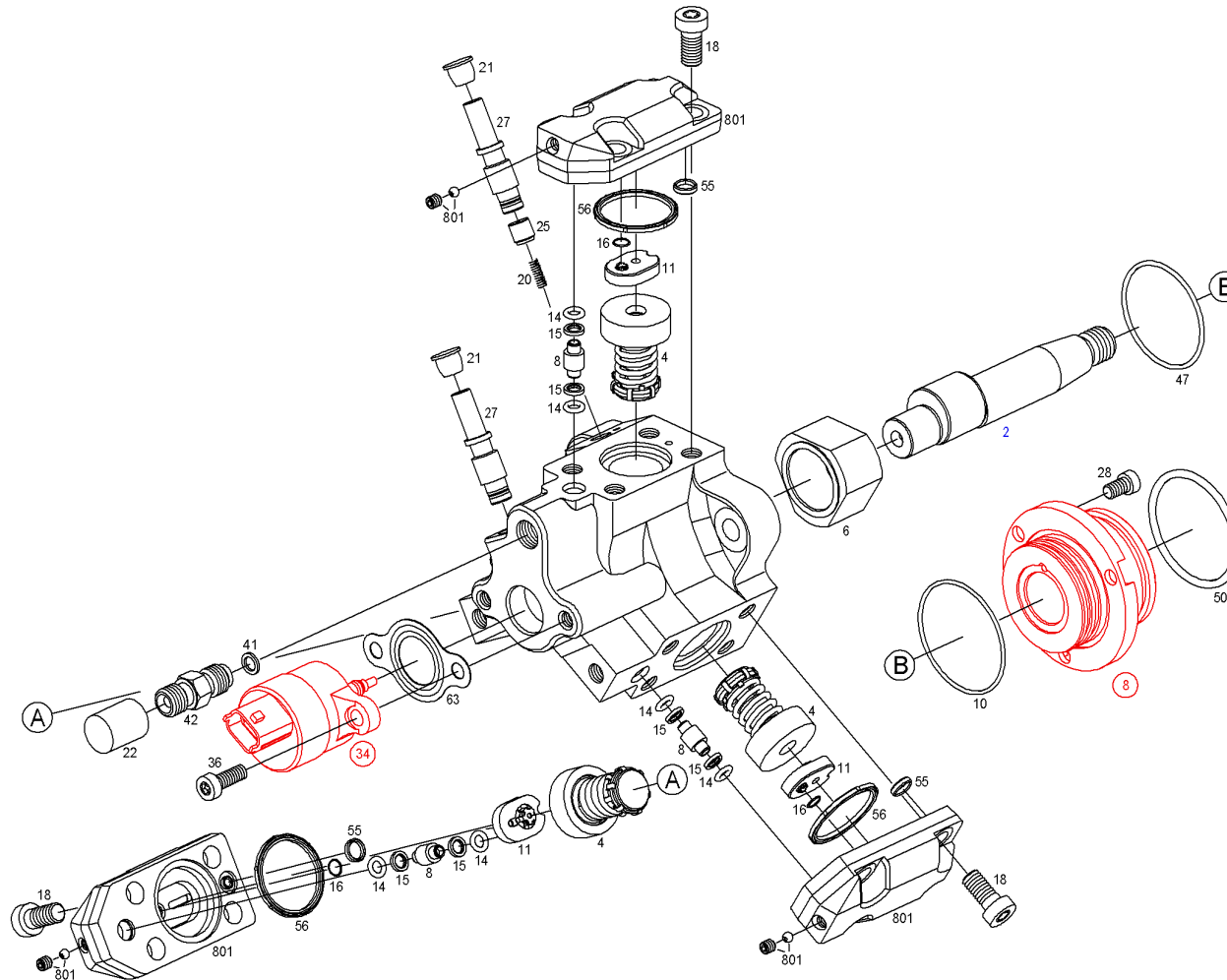




Replacing Parts

Product 0 445 010 028 - High-pressure pump, diesel (CR system) - CR/CP1S3/L70/10-1S



Replacing Parts

0 445 010 028 - High-pressure pump, diesel (CR system) - CR/CP1S3/L70/10-1S

16.2.2016 r.

21:15:50

| Position | Order number | Info | Quantity | Designation |
|-----------|----------------------|----------|----------|---|
| 2 | F 00R 0P1 128 | B | 1 | ECCENTRIC SHAFT |
| 3 | F 01M 101 218 | B | 1 | PARTS SET FLANGE |
| 4 | F 01M 101 349 | B | 3 | PLUNGER-AND-BARREL ASSY |
| 4 | F 01M 101 457 | B | 3 | PLUNGER-AND-BARREL ASSY |
| 6 | F 01M 101 211 | B | 1 | ROLLER |
| 6 | F 01M 101 210 | B | 1 | ROLLER |
| 8 | F 00R 0P0 141 | B | 3 | CONNECTOR |
| 10 | F 00R 0P1 255 | A | 1 | O-RING |
| 11 | F 00R 0P1 249 | B | 3 | NOZZLE-VALVE ASSEMBLY |
| 14 | F 01M 100 389 | A | 6 | O-RING |
| 15 | F 00R 0P0 044 | A | 6 | SUPPORT RING |
| 16 | F 00R 0P0 743 | A | 3 | SEAL RING |
| 18 | F 01M 100 684 | B | 12 | TORX FILLISTER SCREW |
| 20 | F 00R 0P0 183 | B | 1 | COMPRESSION SPRING |
| 21 | F 00R 001 641 | B | 2 | PROTECTIVE CAP |
| 22 | F 00R 0P0 407 | B | 1 | PROTECTIVE CAP |
| 25 | F 00R 0P1 143 | B | 1 | PISTON |
| 27 | F 01M 100 476 | B | 2 | FITTING |
| 28 | F 00R 0P1 718 | B | 3 | CHEESE HEAD SCREW |
| 34 | 0 281 002 483 | B | 1 | PRESSURE REGULATOR |
| 36 | 2 912 738 197 | B | 2 | TORX FILLISTER SCREW |
| 41 | F 00R 0P0 004 | A | 1 | GASKET |
| 42 | F 00R 0P1 720 | B | 1 | FITTING |
| 47 | F 00R 0P1 106 | A | 1 | O-RING |
| 50 | F 01M 100 114 | A | 1 | O-RING |
| 55 | F 00R 0P0 577 | A | 3 | SEAL RING |
| 56 | F 00R 0P0 480 | A | 3 | SEAL RING |
| 63 | F 00R 0P1 466 | A | 1 | FLAT GASKET RING |
| 801 | F 00R 0P1 733 | B | 1 | ASSEMBLY OF SERVICE PARTS CYLINDER HEAD |

Replacing Parts

0 445 010 028 - High-pressure pump, diesel (CR system) - CR/CP1S3/L70/10-1S

16.2.2016 г.

21:15:50

Explanations

- | | |
|---|--------------|
| A | Wear part |
| B | Service part |